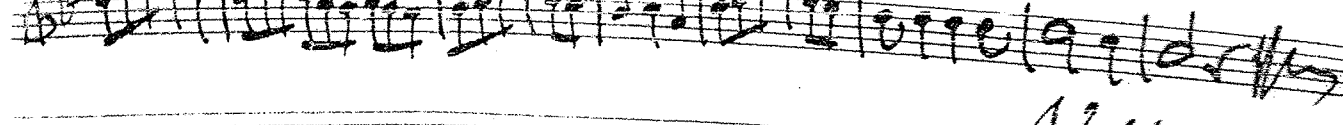
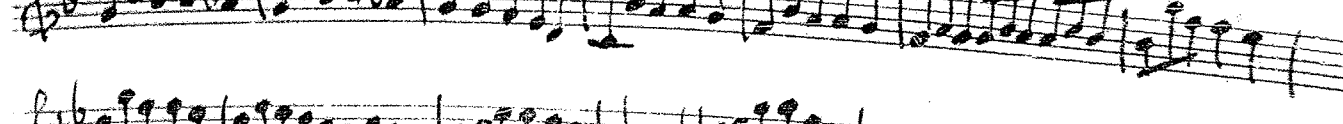
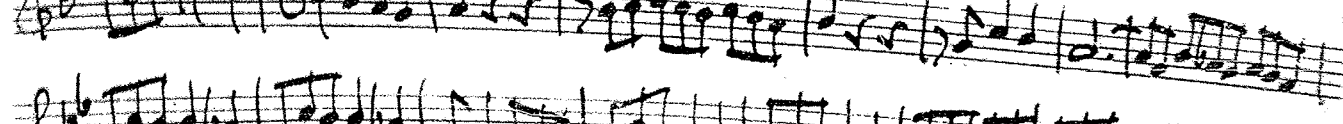
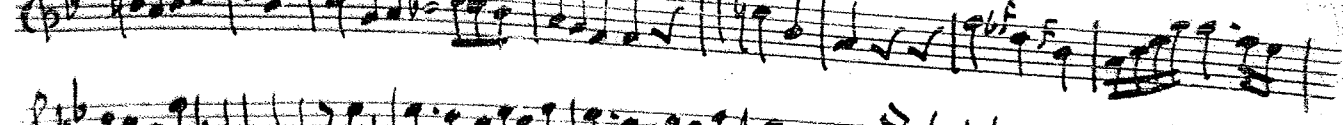
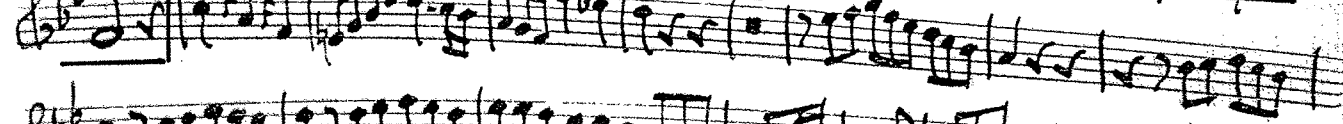
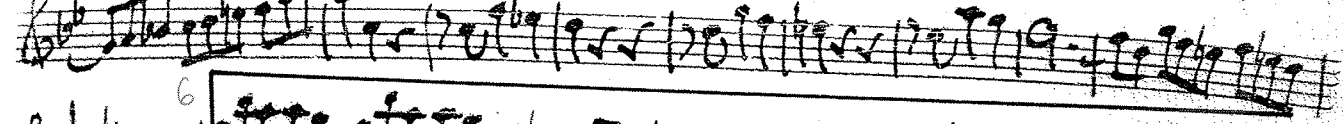
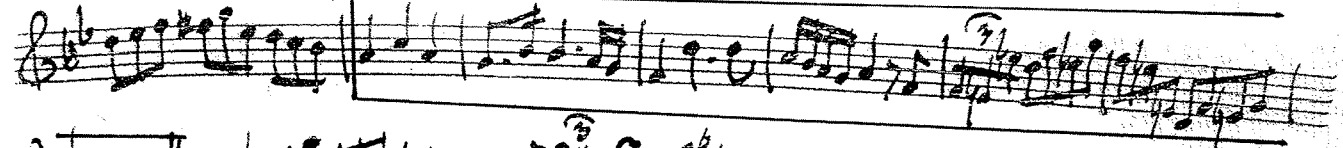


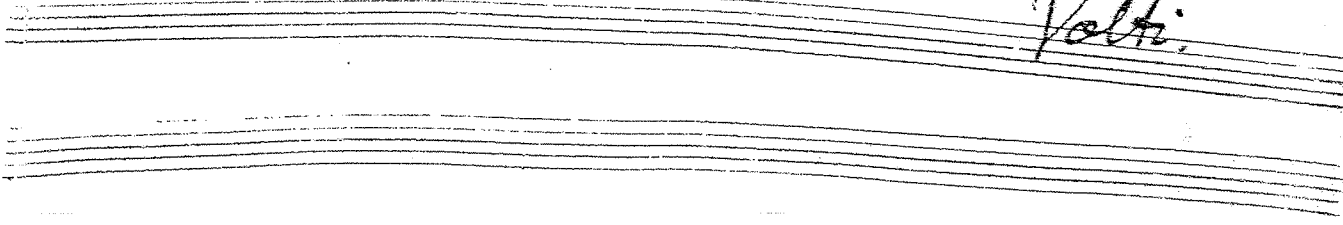
Allegro.

Oboe.

Handwritten musical score for Oboe, marked Allegro. The score consists of 15 staves of music in G major (one sharp) and 3/4 time. The first staff includes a tempo marking of 20. The second staff contains a boxed-in section with a '2' above it. The score features various rhythmic patterns, including eighth and sixteenth notes, and rests. Dynamic markings such as *p.* (piano) and *f.* (forte) are present. The piece concludes with a double bar line and repeat dots on the final staff.



*Volti.*



Presto.

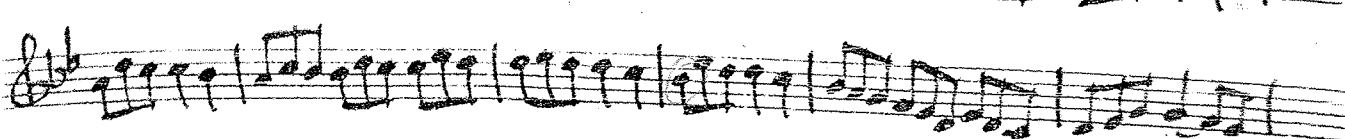
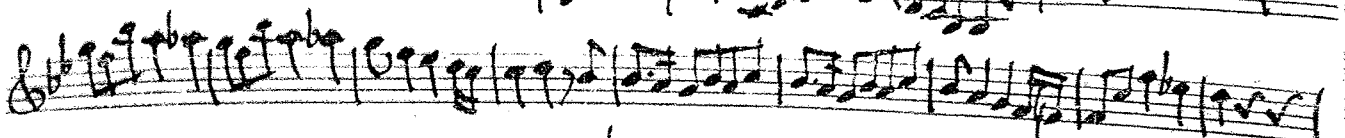
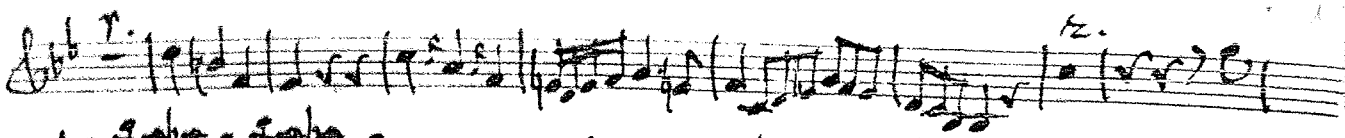
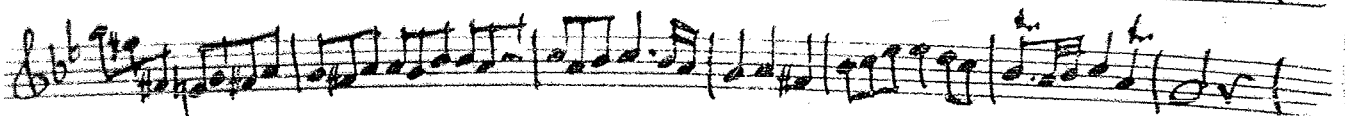
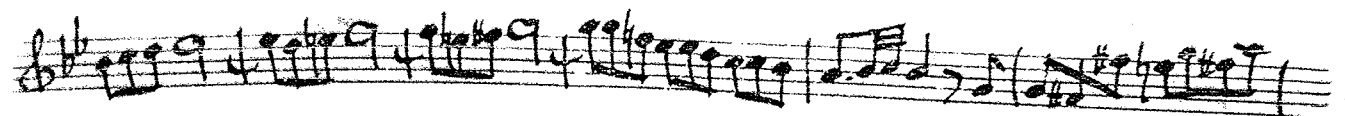
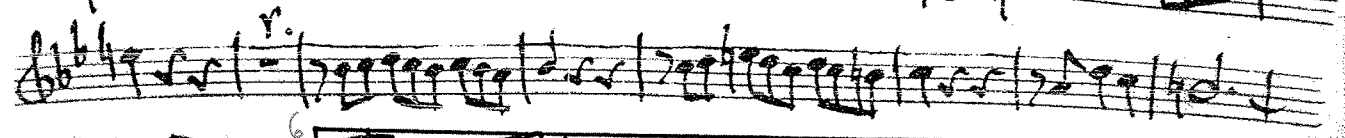
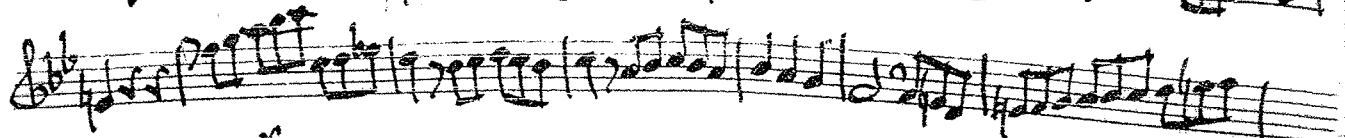
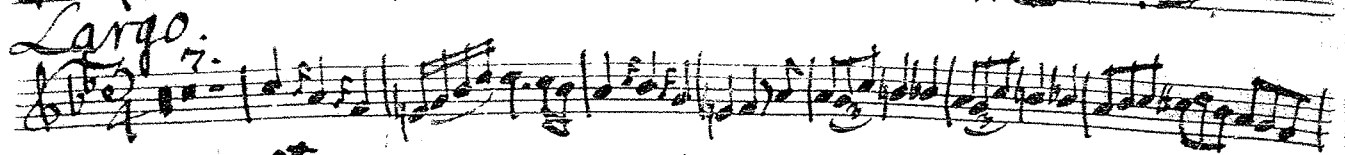
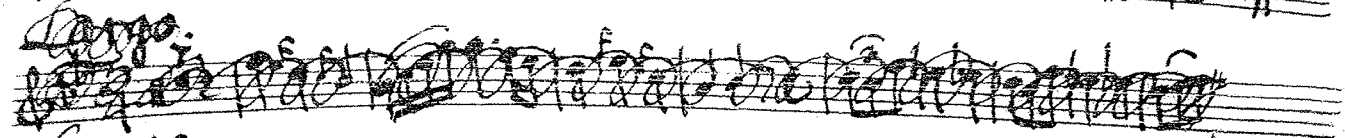
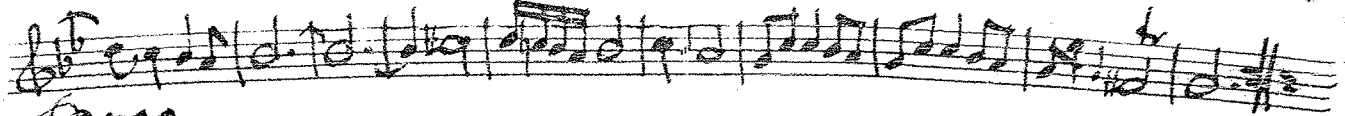
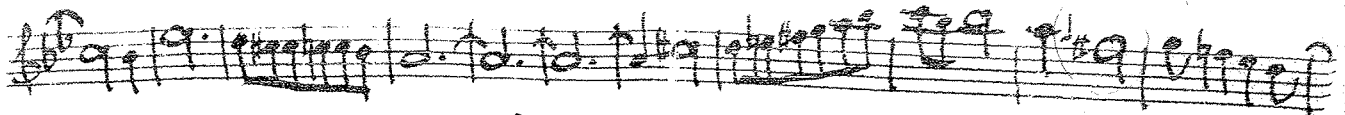
Handwritten musical score for a piece marked "Presto." The score consists of 14 staves of music in G major, 2/4 time. It features various rhythmic patterns, including eighth and sixteenth notes, and rests. There are several dynamic markings such as "f" and "z." (zestoso). Two sections of the music are enclosed in rectangular boxes. The number "46" is written above the eighth staff. The notation includes clefs, key signatures, and time signatures.

Allegro.

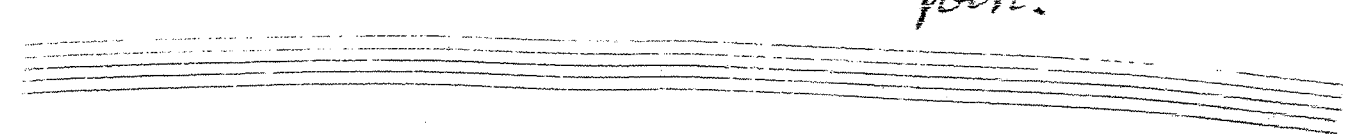
11 Am. 495.2

Violino.

This image shows a handwritten musical score for a violin part, titled "Violino." and marked "Allegro." The score is written on ten systems of two staves each. The notation includes various rhythmic values, accidentals, and dynamic markings. Several sections of the music are enclosed in rectangular boxes, likely indicating specific technical exercises or passages. Annotations include "r." (ritardando) and "p." (piano) written above notes, and "f." (forte) written below notes. Circled numbers (1, 2, 3, 4a, 6) are placed above the staves, possibly indicating measures or sections. The handwriting is clear and legible, typical of a composer's or arranger's manuscript.



*Volte.*



Allegro.

11. Apr 1992

Basso.

This image shows a handwritten musical score for a Bassoon part, titled "Allegro." and dated "11. Apr 1992". The score is written on 14 staves, each with a treble clef and a key signature of one sharp (F#). The music is characterized by a fast tempo and includes a variety of note values, rests, and dynamic markings such as "p" (piano) and "f" (forte). The notation is dense, with many notes beamed together and frequent rests. There are numerous handwritten annotations above and below the staves, including numbers (e.g., 98, 43, 6, 5, 4, 3, 2, 1, 0), symbols (e.g., #, b, >, <), and other markings that appear to be performance instructions or corrections. The paper shows signs of age, with some staining and wear.